



VGIN Coordinator Report to the VGIN Advisory Board
January 2015

VBMP Orthophotography

VGIN and our contractor Sanborn are making preparations for the spring 2015 acquisition flights for the western half of Virginia (see graphic below). A series of three information sessions were held with one webinar:

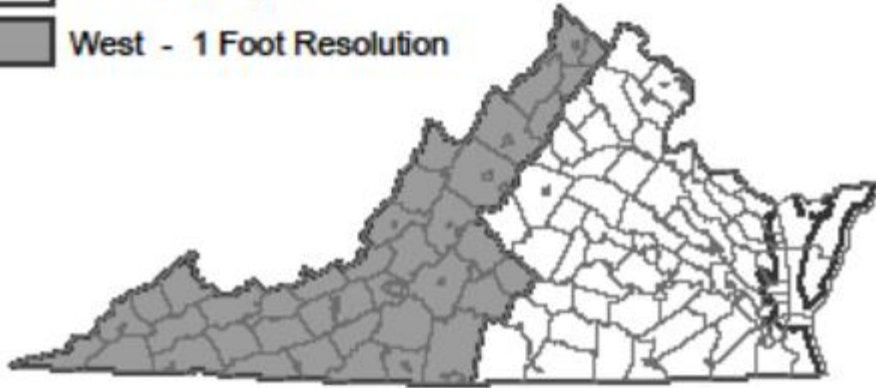
- Abingdon (September 11)
- Roanoke (September 23)
- Harrisonburg (September 24)
- Webinar (October 1, 10 AM)

The cutoff date to submit locality upgrade requests is January 1, 2015. This will allow adequate time for planning the flights.

As of December 15, VGIN has provided quotes to 41 localities and 4 colleges. Of the quotes provided, eleven localities have formally committed to upgrades for 2015. We are waiting for an answer from the remaining localities who have received quotes.

- Arlington – Custom Planimetrics and 3 inch imagery
- Bedford – 6 inch imagery for a portion of the county
- Campbell County – 6 inch imagery for a portion of the county
- Front Royal – 3 inch imagery
- Galax – 6 inch imagery
- Glasgow – 6 inch imagery
- Henrico – 6 inch imagery
- Lexington – 3 inch imagery
- Washington and Lee, VMI and MSA – 3 inch imagery
- Lynchburg – 6 inch imagery
- Liberty University – 6 inch imagery
- Richmond City – 6 inch imagery and True ortho of downtown
- Roanoke City 3 inch imagery
- Rocky Mount – 6 inch imagery
- Stafford – 1 foot imagery
- Staunton – 3 inch imagery

2015 Flight Areas



West Zone - approximately 22,320 tiles

Road Centerline – RCL and Address Points

VGIN's 4th quarter of 2014 Virginia Base Mapping Program's Road Centerline (RCL) data product was released on November 15, 2014. 61 localities were updated this quarter with over 10795 road segments updated. Of these over 992 are new road segments. This updates the overall VBMP road centerline segment count to over 619,330 road segments of which 614,500 are named road segments.

VGIN received a new VDOT data submission in June of 2014 and the inclusion of VDOT business data into the VBMP RCL continues to improve with each quarterly data product. VDOT is still in the process of absorbing VGIN local roads and geometry and attribution "deltas" from the past VBMP RCL releases. This alignment between VGIN RCL and VDOT value added attribution gets closer with every VDOT data submission.

The VBMP Address point dataset is a priority for VGIN and this past quarter saw the strongest input of new data into the state-wide collection since our first data sweep. Address points continue to grow. To date VGIN has obtained 3,520,184 point addresses from 135 of 137 communities in the Commonwealth. We received one new locality's address point dataset this past quarter (Petersburg). The point addressing is based primarily on building footprint, property parcel center, or driveway/doorway access point. This data product feeds the VGIN Geocoding web service, brings greater accuracy for geo-locating addresses and will be invaluable for supporting Next Generation 9-1-1.

Land Cover Data

DEQ and VITA are jointly developing a Memorandum of Understanding for the VGIN services that will be provided with overseeing the development of statewide Land Cover data. A draft Statement of Requirements has been created with input received from DEQ.

VGIN Coordinator Report

We are now working through the various VITA approval and review processes required before the Statement of Requirements is approved for released.

3D Elevation Program (3DEP)

See presentation by John Scrivani at the January Board meeting.

2015-2020 GIS Strategic Plan

See presentation by Michael Baker at the January Board meeting.